

1. Table of Contents (This Page)

Created on Tue Apr 17 22:21:29 2012

2. component

3. solder

4. second

5. third

6. fourth

7. fifth

8. Cut-lines

9. plated-drill

10. componentmask

11. soldermask

12. topsilk

13. bottomsilk

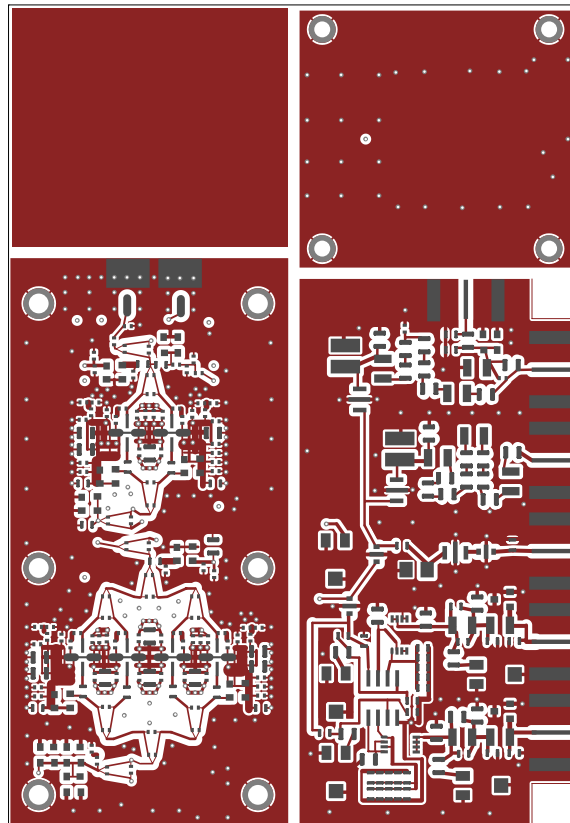
14. toppaste

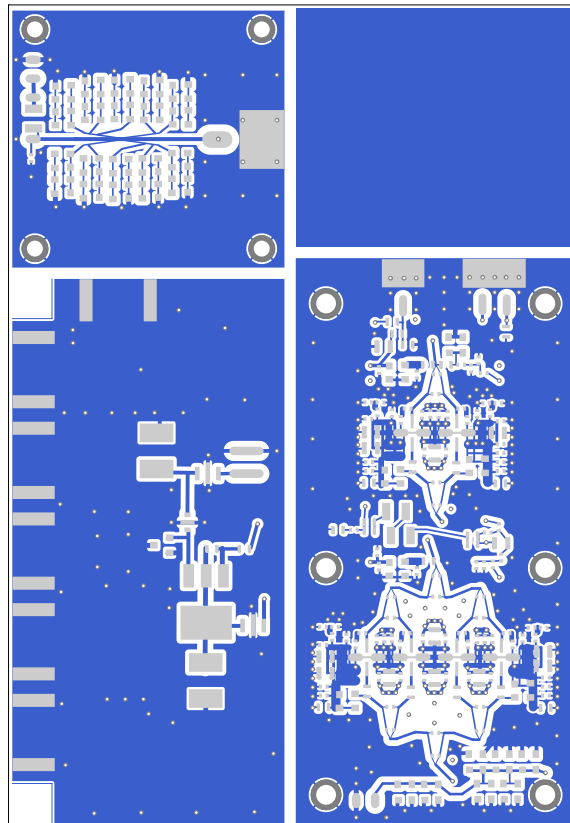
15. bottompaste

16. topassembly

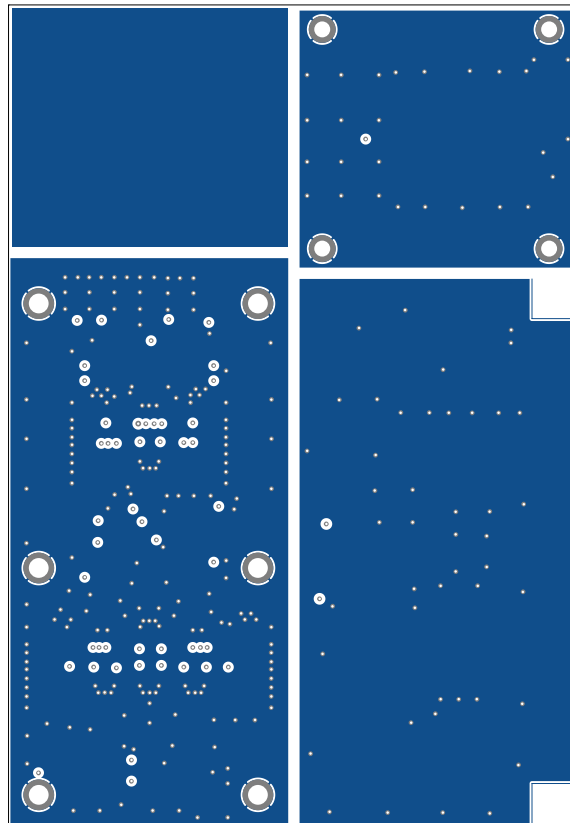
LN4R/lna4r3.pcb
17. bottomassembly

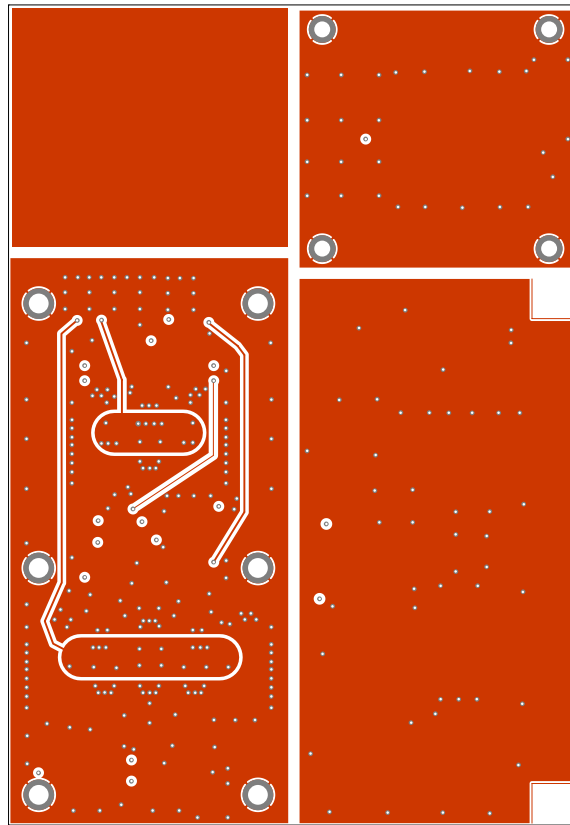
18. f.1

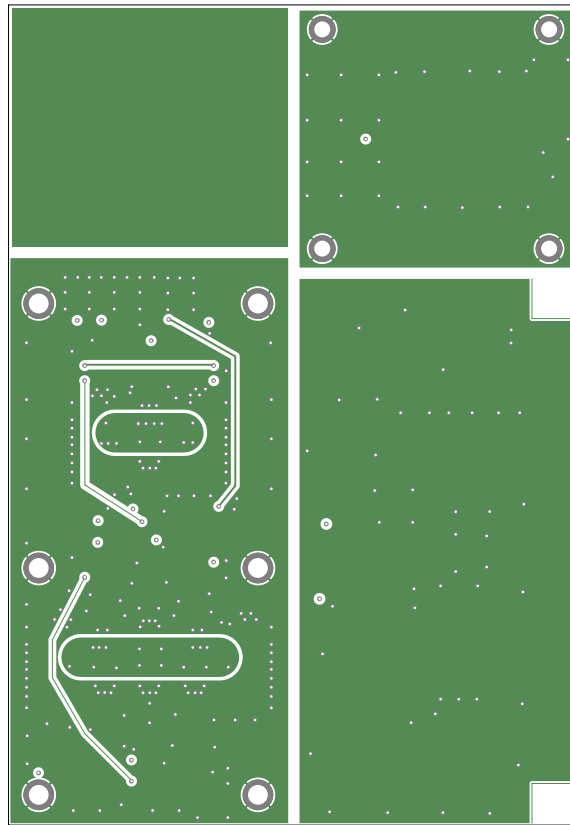


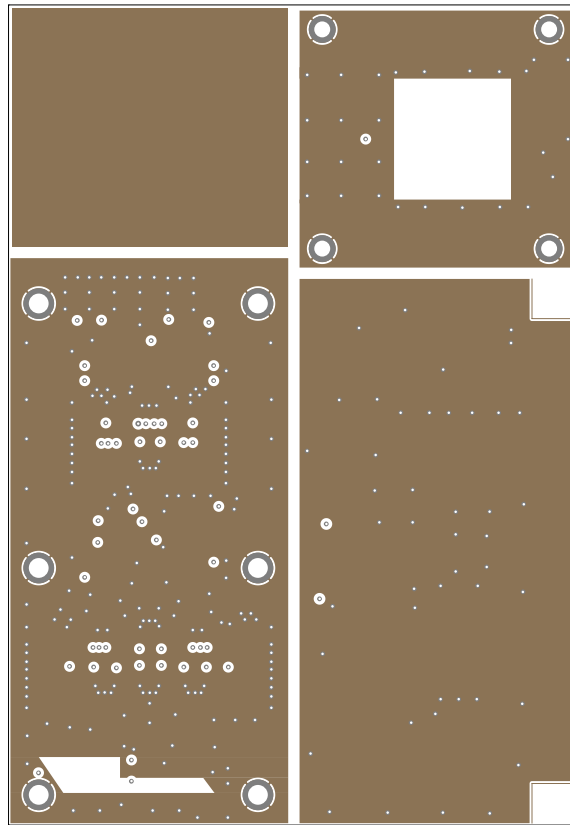


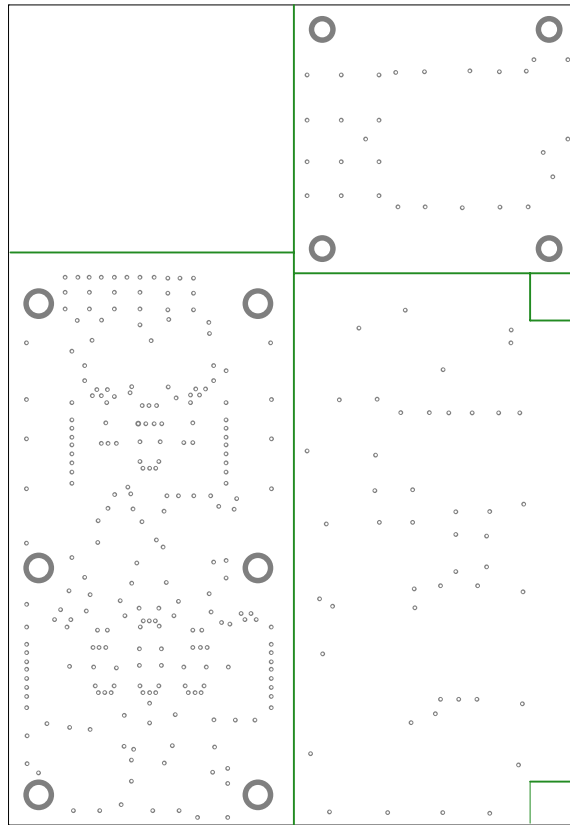
bottom (mirrored), scale = 1:1.000
LNA4R/lna4r3.pcb

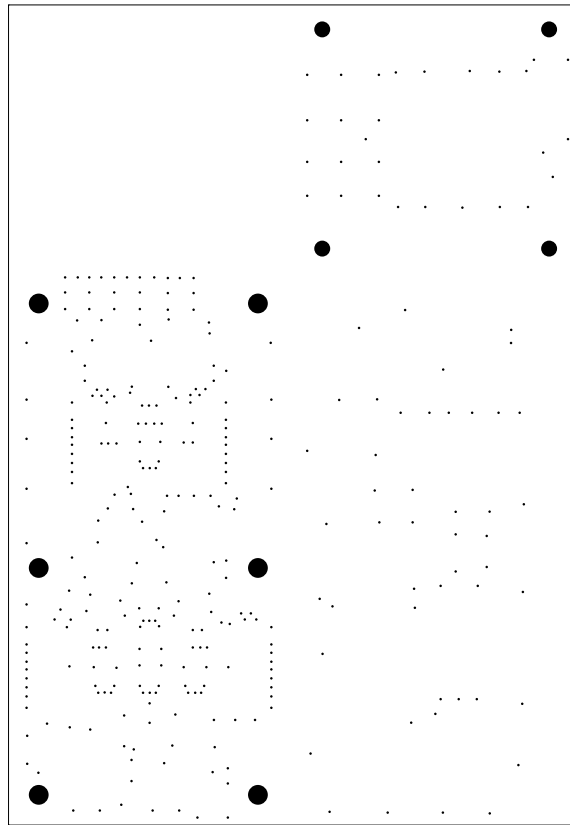


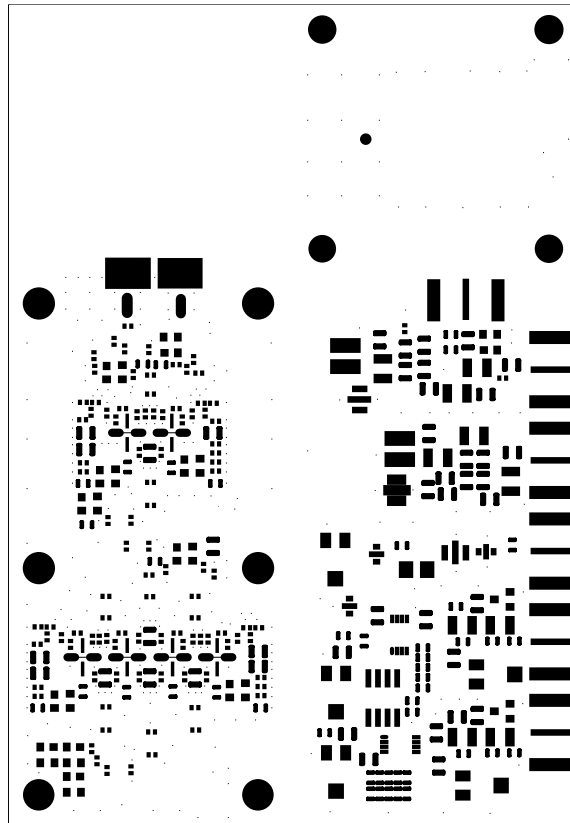


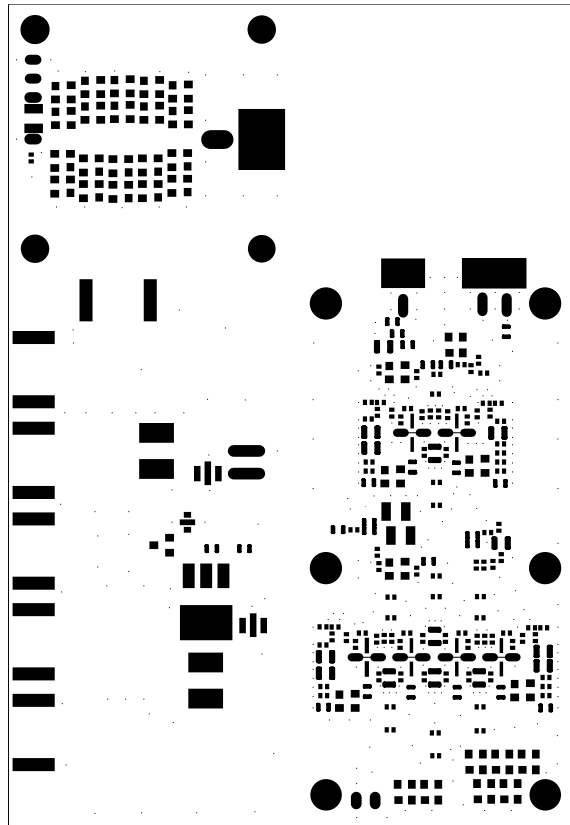


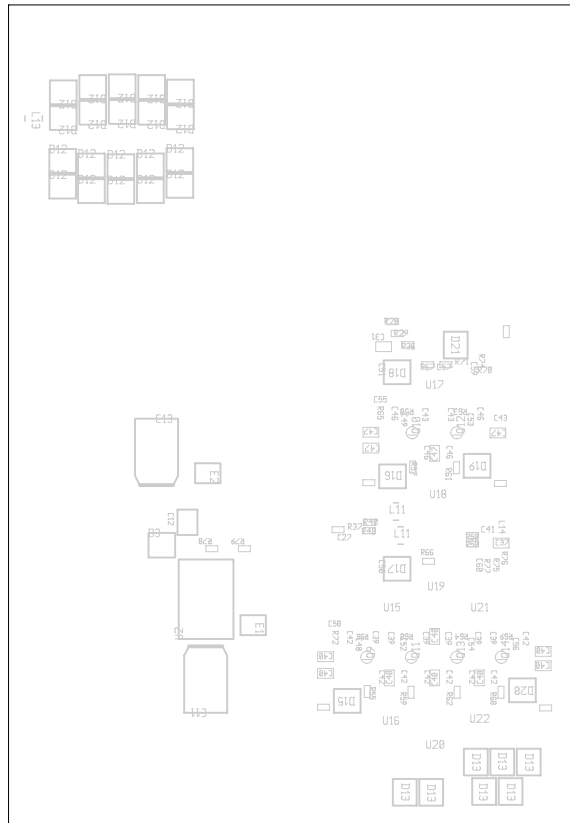


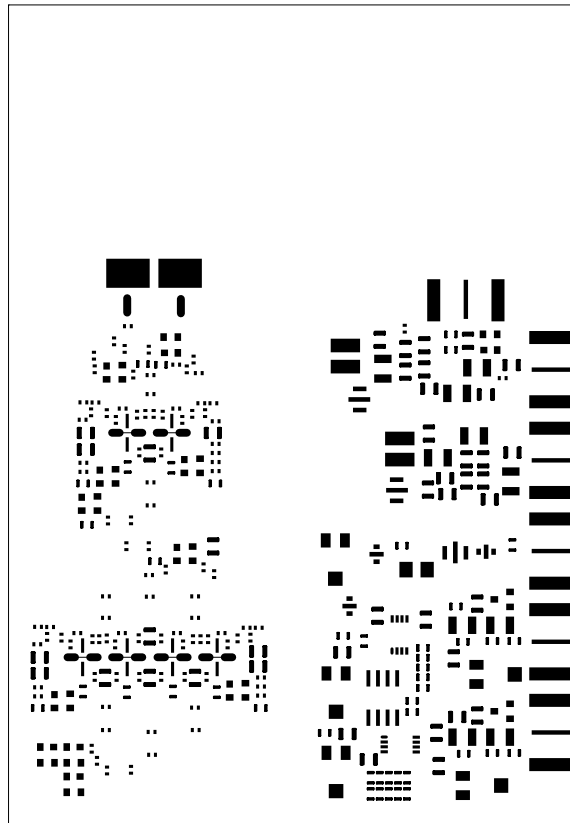


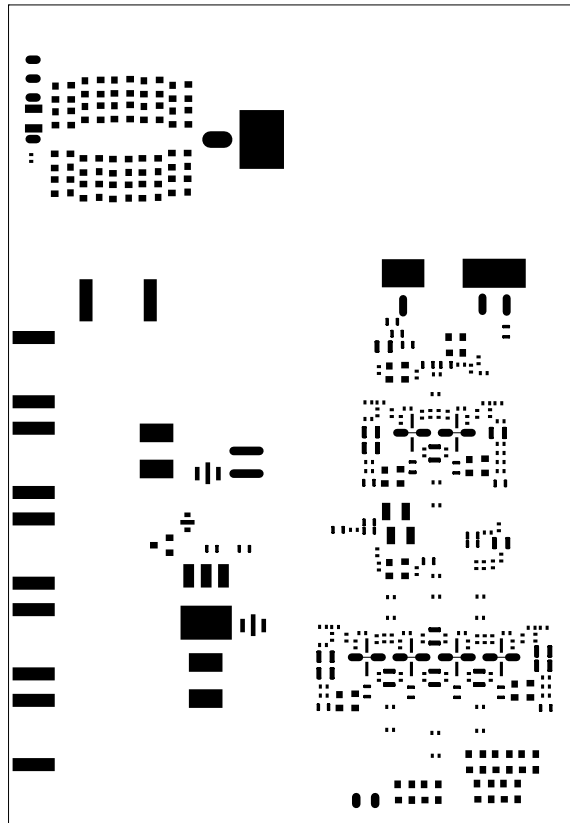


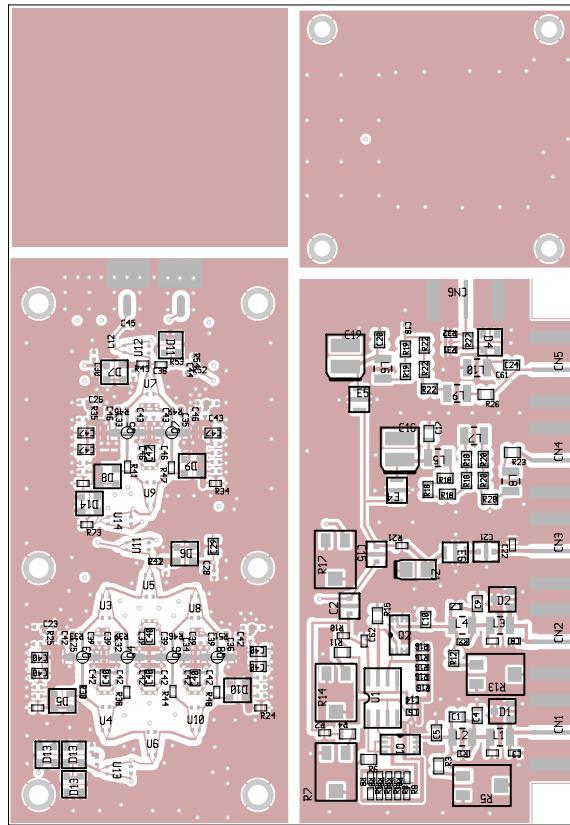


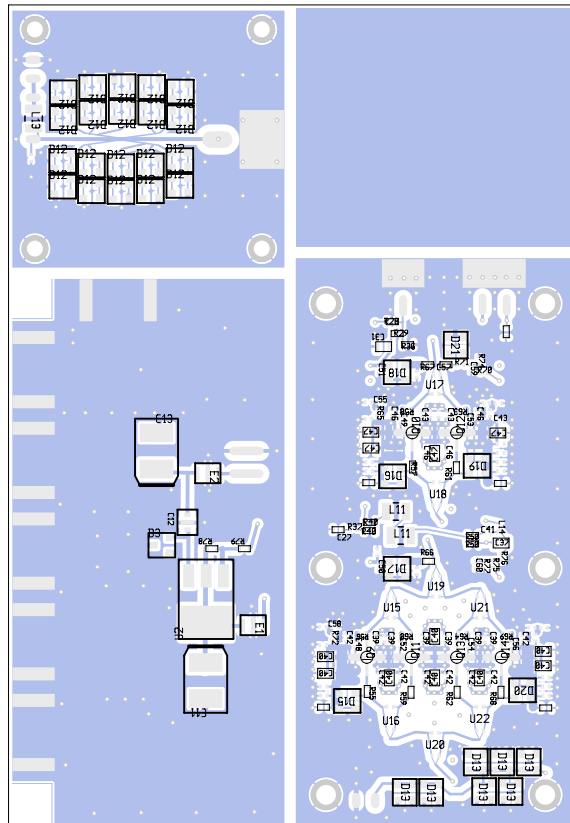












bottomassembly (mirrored), scale = 1:1.000
LNA4R/lna4r3.pcb

There are 3 different drill sizes used in this layout, 321 holes total

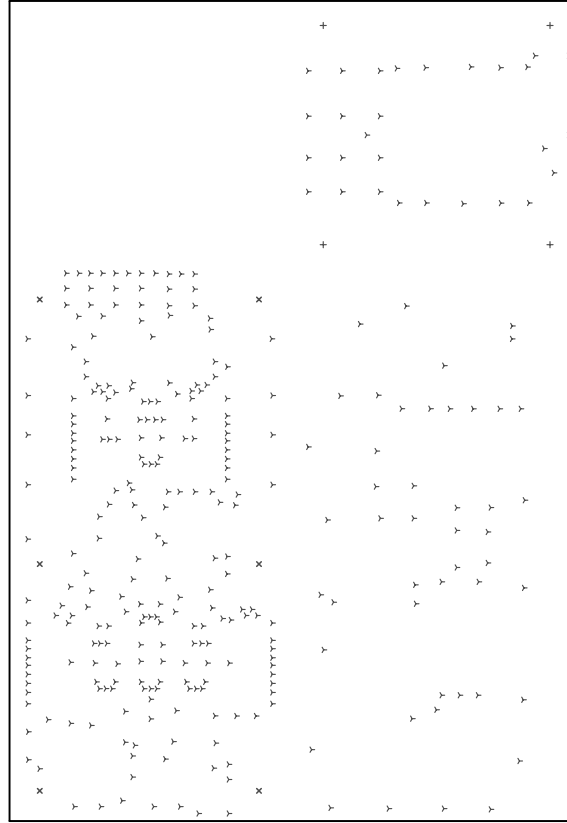
Symbol	Diam. (Inch)	Count	Plated?
y	0.013	311	YES
+	0.083	4	YES
x	0.103	6	YES

Title: (unknown) - Fabrication Drawing

Author: northriv

Date: 4/17 13:21:30 2012 UTC

Maximum Dimensions: 4271.650000 mils wide, 2952.760000 mils high



Board outline is the center-line of this 8.000000 mil rectangle - 0,0 to 4271.650000,2952.760000 mils